

# OUTDOOR

< OCCASIONS >



LOOK INSIDE FOR EVERYDAY SAVINGS ON  
ESSENTIAL ITEMS →



### Take a Seat

The mesh seat design for these barstools is comfortable and functional.

See Page 5

## Outdoor OCCASIONS

**SPRING IS THE SEASON OF RENEWAL.** It's a great

time to think about renewing your

**OUTDOOR FURNITURE**

for your patio dining. Consider adding an outdoor bar area. We've got you

covered with our **BAR BASICS.**

When catering an event, **COUNTER**

**EQUIPMENT** is the perfect

addition for a quick set-up. Having the

freedom to move a reliable piece of commercial equipment from location to location is convenient and reassuring.

Lastly, **CONCESSIONS** are key

this time of year. With warmer weather comes carnivals, fairs and other events that are sure to draw a crowd. Are you

ready for your next big occasion?



### Shake it Up!

This classic design never goes out of style. Made of durable stainless steel for repeated use.

See Page 8



### Hot 'n Ready

This warmer's unique heating element provides even heat distribution to prevent "hot spots."

See Page 11



### Convenient Condiments

Condiments are only a pump away with this sturdy unit.

See Page 12





### Market Umbrellas

- Wooden market umbrella canopy made from Outdura® solution dyed acrylic that is fade, stain and mildew resistant
- 1½" dia pole
- Available in Forest Green (2031), Pacific Blue (9731), Burgundy (2731), Terra Cotta (8231), Khaki (0331), White (0431), Pesto (4931), Sand (4831), Taupe (8131), Turquoise (3131); 9 foot umbrella also available in Spa Blue (5031)

**Grosfillex**  
EXPERT

9894	7 foot	<b>\$240.00</b>
9891	9 foot	<b>\$288.00</b>



### Havana Stacking Armchairs & Barstools

- Decorative wicker finish textured Havana armchairs and barstools with armrests are easy to maintain, clean, and will not harbor mildew, mold or fungi
- Available colors: Espresso (37), Tobacco (08), and Charcoal (02); Barstool also available in White (04)

459030	Armchair	<b>\$71.00</b>
482600	Barstool w/Armrests	<b>\$160.00</b>

### Sumatra Tables

- Molded melamine
- Large pedestal base for stability
- Umbrella hole
- Wicker Decor



US240218	32" Square	<b>\$229.50</b>
US420418	36" Square	<b>\$272.50</b>
US240618	42" Round	<b>\$272.50</b>
US240818	48" x 32" Rectangular	<b>\$323.00</b>

**Grosfillex**  
EXPERT



US240818  
**\$323<sup>00</sup>**

**Grosfillex**  
EXPERT

## Moon Stacking Chairs

- Contemporary version of a traditional cast design
- Low backrest with a wide ergonomic seat
- Can easily be cleaned with soap and water
- Rated to 300 lb for safe use in commercial environments

### CHAIRS

XA649096	Glacier White/Linen
XA649196	Storm Blue/Linen
XA649282	Cactus Green/Linen
XA650579	Titanium Gray/Charcoal

**Your Choice!**  
**\$99<sup>00</sup>**

### ARMCHAIRS

XA651096	Glacier White/Linen
XA651196	Storm Blue/Linen
XA651282	Cactus Green/Linen
XA652579	Titanium Gray/Charcoal

**Your Choice!**  
**\$116<sup>00</sup>**

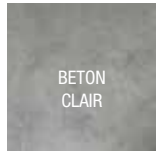
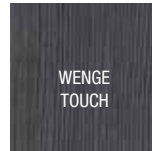
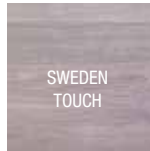
GLACIER WHITE/LINEN

## Square HPL Compact Tabletops

- Contemporary design with a durable matte finish
- Scratch, burn & fade resistant
- RTA to Grosfillex metal bases with Grosfillex patented universal rail system
- 32" x 32" square

US32HP76	Sweden Touch
US32HP19	Wenge Touch
US32HP74	Beton Clair

**Your Choice!**  
**\$165<sup>00</sup>**



## X-One 200 Tilt Top Table Bases

- Patented folding system for security
- Aluminum
- 2 year warranty

USX1W009	Sliver Gray
USX1W017	Black

**Your Choice!**  
**\$107<sup>50</sup>**

**Grosfillex**  
EXPERT



## Dual-Sided A-Frame Sidewalk Marker Boards

- High-tech glossy writing surface
- Durable packaging prevents damage while in transit
- MBAF-3 includes 4 standard markers and an eraser
- MBAF-5 includes 2 standard, 4 deluxe markers and an eraser

MBAF-3	20% <sup>1</sup> l x 39" <sup>h</sup> , Mahogany
MBAF-5	25 <sup>1</sup> / <sub>4</sub> "l x 45" <sup>h</sup> , Premium White Oak

**Call For Pricing**

**winco**



## Seating

- Stackable
- Made in Italy

**emu**  
Seating with Style™

### ARMCHAIRS

- 116HD\*** Ronda, 22½"w x 25½"d x 32½"h, Specify Finish **\$120.00**
- 1101** Sara, 21½"w x 22½"d x 28½"h, Aluminum Finish **\$72.00**
- 1109** Laura, 22"w x 23½"d x 30½"h, Black Finish **\$132.00**

### SIDE CHAIRS

- 111\*** Ronda, 23"w x 24½"d x 34"h, Specify Finish **\$114.00**
- 1000** Flora, 19"w x 22½"d x 32½"h, Aluminum Finish **\$66.00**
- 1004** Anna, 15"w x 20"d x 33"h, Aluminum Finish **\$144.00**
- 1009** Laura, 18"w x 21½"d x 29½"h, Black Finish **\$108.00**

### BARSTOOL

- 128\*** Ronda, 21½"w x 25"d x 46"h, Specify Finish **\$258.00**
- 1209** Laura, 16½"w x 21½"d x 34½"h, Black Finish **\$198.00**

\*Ronda is available in Aluminum, Black, Antique Iron, Antique Bronze, or White



116HD



1101

**\$72.00**



1109



111



1000



1009

**\$108.00**



1004



128



1209



Bistro Solid Top Tables

- Available quick ship finishes: Aluminum, Antique Iron or Antique Bronze



901	Square, 30" x 30"	\$309.00	BAR HEIGHT TABLES	
900	Round, 24" dia	\$222.00	900H Round, 24" dia	\$246.00
902	Round, 32" dia	\$276.00	902H Round, 32" dia	\$294.00



BISTRO TABLES  
IN ALUMINUM



BISTRO TABLE  
IN ANTIQUE IRON

Cambi Mesh Top Tables

- Available quick ship finishes: Aluminum, Antique iron, Antique Bronze & Black



MESH TOP  
FOR QUICK DRYING

800	Square, 24" x 24"	\$228.00
834	Rectangular, 24" x 32"	\$264.00
820	Round, 32" dia, Bar Height	\$276.00
W/UMBRELLA HOLE		
801	Square, 32" x 32"	\$279.00
802	Square, 36" x 36"	\$312.00
803	Round, 32" dia	\$264.00
813	Round, 36" dia	\$315.00
804	Round, 42" dia	\$336.00
805	Round, 48" dia	\$390.00



## "2001" Series Pourers

- Made of space-age plastics that are extremely durable and immune to corrosion and wear
- Cork features flexible, graduated fins with a "memory" quality for a leak proof fit on any bottle
- Collar available in Black only
- Cs Pk 1 dz



**Many color and size combinations available!**

COLLAR	NO COLLAR	NOZZLE	BASE
P20010	P23010	Red	½ oz, Orange
P22011	P24011	Clear	¾ oz, Black
P25012	P32012	Smoke	¾ oz, Green
P20013	P23013	Red	7/8 oz, Blue
P61014	P62014	Neon Green	1 oz, Red
P61015	P62015	Neon Green	1 1/8 oz, Purple
P63016	P64016	Neon Red	1 ¼ oz, Clear
P22017	P24017	Clear	1 ½ oz, Yellow
P65018	P66018	Neon Blue	2 oz, White



**Your Choice!**  
**\$34<sup>99</sup>** /DZ



## "370" Free Pourers

- Cs Pk 1 dz

**Co-Rect®**  
A COORIN BRANDS COMPANY

		SALE/DZ
OP0370	Chrome Plated Spout, No Collar	<b>\$9.99</b>
OP0371	Chrome Plated Spout, Black Collar	<b>\$9.99</b>
OP0372	Clear Spout, No Collar	<b>\$5.99</b>
OP0373	Clear Spout, Black Collar	<b>\$6.99</b>
OP0374	Smoke Spout, No Collar	<b>\$6.99</b>
OP0375	Smoke Spout, Black Collar	<b>\$6.99</b>
OP0377	Amber Spout, Black Collar	<b>\$6.99</b>

## Original Free Pourers

- Regular speed
- Available in Kelly Green (01), Mint Green (02), Sparkle Green (03), Sparkle Red (04), Fluorescent Red (05), Blue (11), White (13), Clear (14), Yellow (15) and Black (16)
- Cs Pk 1 dz

OP0301



**\$3<sup>99</sup>** /DZ



## Spotlight Your Outdoor Bar

Equip your outdoor bar with the right tools for success. Remember, what's on the menu matters. A signature drink can help develop a unique identity for your outdoor bar and dining area.

To learn more visit: [talesofthecocktail.com](http://talesofthecocktail.com)

## Metal Screen Pourers

- For a clean, smooth stream of liquid
- Prevents fruit flies and other contaminants from entering
- Cs Pk 1 dz

		SALE/DZ
A.	MP22550 Chrome-Jet w/Screen, No Collar	<b>\$14.99</b>
B.	MP24550 Chrome-Super Jet, No Collar	<b>\$14.99</b>
C.	MP26550 Chrome-Heavy Pourer, No Collar	<b>\$24.99</b>
D.	MP26551 Chrome-Heavy Pourer, Black Collar	<b>\$25.99</b>
E.	MP28550 Chrome-Tapered Pour, No Collar	<b>\$9.99</b>
F.	MP28551 Chrome-Tapered Pour, Black Collar	<b>\$11.99</b>
G.	MP28570 Chrome-Jet w/Flip Top, Black Collar	<b>\$13.99</b>
H.	MP28553 Oversize ½ gal Metal Pour w/Cork	<b>\$14.99</b>
I.	MP28535 Oversize 35mm Metal Pour w/Cork	<b>\$21.99</b>



**Co-Rect®**  
A COORIN BRANDS COMPANY

# Outdoor OCCASIONS ►

## Universal Speed Rails

- Stainless steel
- Adjustable length
- Holds quart or liter bottles

512232 Single, Adjusts from 22" - 32", **\$24.99**  
Holds up to 8 Bottles

513242 Double, Adjusts from 32" - 42", **\$36.99**  
Holds up to 10 Bottles



## Ultimate Garnish Station

- Black polystyrene, clear polystyrene lid
- Includes 1 quart, 4 pints, (2) side caddies and integrated five tray rimming station

BCD1400  
24¾" x 7¼" x 6¼"  
**\$49<sup>99</sup>**

## Plastic Bar Shaker Sets

- Cocktail shakers feature 3-piece design: shaker, strainer and 3 oz cap
- Clear
- Constructed of lightweight and durable SAN plastic
- Dishwasher safe

PS379 20 oz  
PS378 27 oz

**Your  
Choice!  
\$4<sup>99</sup>**



## Stainless Steel Shaker Sets

- Three piece set includes shaker, strainer and jigger

POLISHED S/S

CSJ5134 8 oz **\$6.99**

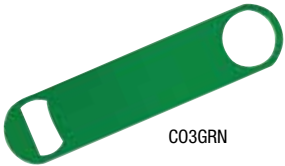
CSJ5135 16 oz **\$8.99**

BRUSHED S/S

CSJ5134B 8 oz **\$7.99**



**Co-Rect<sup>®</sup>**  
Products  
A CROWN BRANDS COMPANY



CO3GRN

CO3\_\_\_\_  
**\$3<sup>50</sup>**

## Powder-Coated Long Neck Openers

- Specify color: Black (BLK), Blue (BLU), Green (GRN), Light Blue (LTBLU), or Red (RED)



CO3VRED

CO3V\_\_\_\_  
**\$5<sup>50</sup>**

## Vinyl-Coated Long Neck Openers

- Specify color: Black (BLK), Blue (BLU), Green (GRN), Orange (ORG), Pink (PNK), Red (RED), Silver (SIL), White (WHT) or Yellow (YEL)



### Ice Trays

- Black silicone

**New**

BSCT2	Jumbo Ice Cube, 4 - 1 1/4" Cubes	<b>\$4.99</b>
BSRT2	Ice Sphere, 4 - 2" Spheres	<b>\$5.99</b>
BSST	Shot Glass, 4 - 1 oz Shot Glasses	<b>\$5.99</b>



### Bar Charger/Napkin Holder

- An easy and convenient way customers can recharge devices
- Includes 6 USB charging ports and a 5 foot cord
- Three compartments for storing napkins, straws and stir sticks
- 120V, 60 Hz

90029

**\$44.99**

**CHEF-MASTER**



### Glass Rimmer

- Black polystyrene
- 5 swing out trays

### Resealable Glass Jars & Wire Racks

- Resealable condiment jar set with clip-top lids with gaskets for convenient, sealed storage
- Perfect capacity for holding maraschino cherries, citrus slices and other condiments for your guests' favorite cocktails
- Black powder coated wire racks are the perfect way to display jars



CJS12	4-Piece Resealable Jar Set, 12 oz	<b>\$8.99</b>
CJS12R	Wire Rack w/Handles, Holds 4 Jars*	<b>\$8.99</b>
CJS12R2	Two Tier Wire Rack, Holds 8 Jars*	<b>\$16.99</b>

\* (CJS12 JARS - NOT INCLUDED)

## Flex Tile Bar & Shelf Liner

- Textured PVC vinyl
- Easily cut to size
- Excellent drainage and air circulation
- Tiles snap together to accommodate any area
- 12" x 12", Black

2553-CT **\$7.99**



**Cactus Mat**  
MANUFACTURING COMPANY  
*Quality and Reliability since 1990*



## Vina Tex Shelf Liner

- Provides skid-resistance and thorough draining
- Lightweight vinyl easily cuts to any size
- Use in drawers to protect utensils
- Reduces noise
- 1/8" thick
- Available in Black (BK2), Clear (C2), Green (G2), Red (R2), and White (W2)

3005R 2' x 40' Roll **\$59.99/Roll**



## Smoking Receptacle

- Push button feature to easily remove the top and empty contents
- Commercial grade steel
- Weather-resistant
- Weighted base for stability
- Self-extinguishing plate

90026  
**\$59.99**



## Insulated Ice Caddy with Sliding Cover

- Can be used inside or outdoors, in heat or humid conditions
- Drain shelf keeps the ice separate from the water, greatly increasing storage time
- Polyethylene molded body is durable and lightweight
- Polyurethane foam insulation keeps ice cold for several days
- Recessed front end handle for convenient pulling or lifting
- No assembly required

**IIC-29**

125 lb Capacity

**Call For Pricing**



**Winco**

## Barrel Style Wine Cellar

- Enchanted country style design with oak finish and compact dimensions
- Accommodates approximately 26 standard wine bottles
- Dual temperature zones
- Choose your ideal temperature between 41° to 50°F (5° to 10°C) for the upper zone and 50° to 64.4°F (10° to 18°C) for the lower zone, the perfect drinking temperatures of red, white and rosé wines
- 110V



**euodib**



BARREL 29.7" w x 41.5" d

**\$993.99**



## "Ice Only" Storage Containers

FCW-10ICE 10 gal  
FCW-20ICE 20 gal

**Call  
For Pricing**



## Prepare For Upcoming Events

Outdoor grills and portable counter equipment are ideal for use at outdoor events. The right equipment can make outdoor entertaining a profitable part of your business.

## Outdoor OCCASIONS ►

### PaniniPro™ High-Speed Sandwich Press

- With simultaneous conduction and microwave heating, sandwiches are ready in about 60 seconds with no pre-heat necessary
- Spring-loaded upper plate ensures uniform plate-to-food contact
- Nonstick coating on all food-contact surfaces
- Preprogrammed with 4 standard heating cycles
- 4 push-button electronic controls
- 14½" w x 31" d x 29" h

**Your Choice!**  
**\$7573<sup>50</sup>**

208V MODELS      240V MODELS  
GROOVED TOP/FLAT BOTTOM  
**6900-208-GF      6900-240-GF**  
GROOVED TOP/GROOVED BOTTOM  
**6900-208-GG      6900-240-GG**  
FLAT TOP/FLAT BOTTOM  
**6900-208-FF      6900-240-FF**



### Two Bulb Heat Lamps

- Height adjusts 10" to 21"
- 250 watt white infrared bulbs
- Powder coated finish
- 120V



*Pan not included*



6000A-2	Grey	<b>\$94.99</b>
6000A-2B	Black	<b>\$97.99</b>
6000A-2C	Chrome	<b>\$108.99</b>

### Countertop Warmers

- Conduction type thermostat
- Unique heating element provides even heat distribution to prevent "hot spots"
- Heavy-duty stainless steel well
- 14½" wide
- 120V

**nemco**® FOOD EQUIPMENT



FULL SIZE - 23½"D		
6055A	Warmer, 1200W, 9"h, CE	<b>\$109.99</b>
6055A-CW	Cooker/Warmer, 1500W, 10½"h	<b>\$208.99</b>
4/3 SIZE - 31"D		
6055A-43	Warmer, 1500W, 10½"h	<b>\$192.99</b>

### Black Diamond Thermostatic Gas Griddles

- Stainless steel front, sides and splash guards
- Griddle plate is made up of 1" thick polished steel
- Adjustable thermostat from 200° - 450°F
- ¾" rear NPT gas inlet

	WIDTH	BURNERS	BTU	
BDCTG-24T	24"	2	60,000	<b>\$730.99</b>
BDCTG-36T	36"	3	90,000	<b>\$945.99</b>
BDCTG-48T	48"	4	120,000	<b>\$1233.99</b>
BDCTG-60T	60"	5	150,000	<b>\$1517.99</b>



BDCTG-36T



**Admiral Craft**  
Equipment Corp.



### Black Diamond Gas Charbroilers

- Fully welded stainless steel front bullnose and backsplash
- Cast iron grill grates are reversible and adjustable
- ¾" rear NPT gas inlet

	WIDTH	BURNERS	BTU	
BDECTC-16/NG	16"	1	30,000	<b>\$391.99</b>
BDECTC-24/NG	24"	2	60,000	<b>\$574.99</b>
BDECTC-36/NG	36"	3	90,000	<b>\$771.99</b>
BDECTC-48/NG	48"	4	120,000	<b>\$1088.99</b>



BDECTC-36/NG





**Condiment Dispenser**

- Durable 18/8 stainless steel
- (2) standard pumps and (2) 2 qt inserts
- 11½"l x 11"w x 16½"h

**PKTS-2D**



**Winco**

**Call For Pricing**

Countertop Deep Fryers

- Commercial fry basket(s) with safe secure handle
  - Extra fast heat up
  - Removable stainless steel fry well(s) for easy cleaning
- Removable power head(s)
  - Fry well cover(s) included
  - 16" d x 13¾" h
  - 120V, (2) 1750W, 60HZ, (2) 15A

EFS-16 Single Well, 16 lb Oil Capacity

EFT-32 Double Well, 32 lb Oil Capacity

**Call For Pricing**



Spectrum Hot Dog Rollers,  
Bun Drawer Warmers & Sneeze Guards

- Stainless steel body and drip tray
  - Non-stick rollers are coated with Whitford Xylan®, for superior resistance to wear and abrasion
  - Two zone heating for cooking and warming simultaneously
  - Multiple power levels
- Sneeze guards increase sanitation and protect food from airborne contaminants
  - Bun drawer provides sanitary holding area for hot dog buns
  - 1 year warranty
  - EHD-30NS 120V, 1430W, 12A
  - EHD-50NS 120V, 1760W, 14.6A



**EHD-30NS** 30 Dog Hot Dog Roller

ACCESSORIES FOR EHD-30NS

- EHD-30-BD Bun Drawer Warmer
- EHD-30-SG Sneeze Guard, Pass-Thru
- EHD-30-SGD Sneeze Guard w/Door

**Call For Pricing**

**EHD-50NS** 50 Dog Hot Dog Roller

ACCESSORIES FOR EHD-50NS

- EHD-50-BD Bun Drawer Warmer
- EHD-50-SG Sneeze Guard, Pass-Thru
- EHD-50-SGD Sneeze Guard w/Door

**Call For Pricing**



Refrigerated Countertop Prep Units

- Includes stainless cover for refrigerated area
  - Completely self-contained
  - Includes pan supports and ¾ size S/S pans and covers
  - Electronic thermostat with external digital LED display
- Temperature range 33° to 41°F
  - 15½" d x 11" h
  - 1 year parts and labor warranty

	WIDTH	PAN CAPACITY	
ACP40	39½"	6	<b>\$675.00</b>
ACP55	55"	10	<b>\$750.00</b>





A Division of The Legacy Companies

## Granita/Frozen Beverage Machines

- Lighted top panel to illuminate product
- Durable clear polycarbonate containers
- Stainless steel cooling cylinder, frame, and front panel
- Continuous agitator stirs product and keeps it fresh

- Powerful ½ hp motor
- Removable drip trays for easy cleaning
- Compact design saves counter space
- 18½" d x 33¼" h

OFS20 (2) 3 gallon Bowls, 15" w

**\$2739.95**

OFS30 (3) 3 gallon Bowls, 24" w

**\$3829.95**

AUTOMATIC REFILL SYSTEMS AVAILABLE



OFS30

## Concession Ready?

The season for outdoor events is near. Frozen drink machines, hot dog grills and ice cream cabinets are great additions to any concession station.

## QuickGel Frozen Dessert Dispenser

- Chills at or below 20°F, creating a product similar to soft serve
- 30 lb/hr production
- User-friendly interface
- Compact design
- LED back-lit graphics
- 10.2" w x 22.4" d x 28.3" h
- 115V
- 2 year parts & labor warranty

QUICKGEL  
1 gal Bowl  
**\$4499<sup>50</sup>**



**Grindmaster  
Cecilware**



## Crathco® Classic Bubblers™ Premix Cold Beverage Dispensers

- Super-strong, polycarbonate 5 gallon bowl and cover
- Stainless side panels and drip tray
- Two-piece, stainless steel dripless dispense valve
- Cools fast for quick start-up
- 2 years limited parts and labor warranty
- Includes spray and agitation circulation options
- 120V

D25-3 2 Bowls, 17½" w x 15" d x 27¼" h

**\$980.50**

D35-3 3 Bowls, 25½" w x 15½" d x 27¼" h

**\$1271.50**

## Crathco® Frozen Beverage Dispenser

- Serve frozen smoothies, frozen cappuccinos or lattes, granitas, frozen fruit juices, lemonades, slushes or cocktails
- Freezing cylinder keeps frozen beverage available
- FlavorLight™ illuminates the frozen beverage with your choice of eye catching back-lit signs to draw customers and increase sales
- 2 year parts & labor warranty



**Grindmaster  
Cecilware**



3311 Single Barrel, 1½ gal Frozen,  
5 gal Storage/Side, 13" w x 29" d x 28½" h **\$4304.50**

3312 Twin Barrel, 1½ gal Frozen  
2¼ gal Storage/Side, 18½" w x 29" d x 26¼" h **\$5489.00**





GTD3-C

GTD3-FOT

**Iced Tea Dispensers**

- Stainless steel construction and faucet connection
- 3 gallon capacity
- Completely passivated inside and out to preserve flavor
- Fits most competitors' brewers
- Tall faucet for ease of use
- No liner required
- 5.9"w x 13½"d x 22"h
- 2 year parts & labor warranty



**Grindmaster  
Cecilware**

GTD3-C Crathco® Valve for One-Hand Operation

**\$85.00**

GTD3-FOT Tomlinson® Front Valve

**\$70.00**

**Mobile Ice Cream Freezers**

- Flat, tempered clear glass sliding lids
- Interior LED lights
- Tempered glass sneeze guard
- Molded plastic lid frame heated to prevent frost or ice build up
- Bottom defrost drain w/plug
- External analog thermometer display
- Exterior is white, zinc coated, baked on enamel steel
- Interior is painted white powder coated steel
- 27"d x 53"h

	TUBS	TUBS (STORAGE)	WIDTH	
MXF31F	4	2	31½"w	<b>\$933.38</b>
MXF52F	8	6	52"w	<b>\$1135.25</b>
MXF71F	12	10	71"w	<b>\$1420.25</b>



MXF31F



**MAXX COLD**

*A Division of The Legacy Companies*

**Ice Cream Dipping Cabinets**

- Flat, tempered clear glass sliding lids
- Interior LED lights
- Tempered glass sneeze guard
- Molded plastic lid frame heated to prevent frost or ice build up
- External digital thermometer
- Exterior is white, zinc coated, baked on enamel steel
- Interior is painted white powder coated steel
- 27"d x 53"h



	TUBS	TUBS (STORAGE)	WIDTH	
MXDC-4	4	2	31½"w	<b>\$1411.70</b>
MXDC-8	8	6	51½"w	<b>\$1868.18</b>
MXDC-12	12	10	70½"w	<b>\$2469.05</b>

MXDC-8



## Outdoor OCCASIONS ►

### Outdoor Fryers

- Stainless steel cabinet and fry tank
- Two 14" wheels and two total lock casters
- Two fry baskets per tank
- Includes 40 lb vertical propane tank and tank holder
- Four tubes per tank positioned for easy cleaning
- Stainless steel positive latch cover with integrated basket hanger
- 1¼" NPT drain valve with drain pipe extension

**MagiKitch'n**

**MCF14** 40 lb Oil Capacity, 115,000 Btu/hr **\$2930.40**

**MCF18** 65 lb Oil Capacity, 150,000 Btu/hr **\$4106.30**



### Transportable Outdoor Gas Grills

- Stainless steel front, 8" service shelf and radiants
- Chrome cooking grid
- Tank hook up (60" has two) with regulators (safety system)
- Steel legs with 6" casters

**LPG-30** 30" wide, 4 Burner, 80,000 Btu/hr **\$2032.80**

**LPG-60** 60" wide, 8 Burner, 160,000 Btu/hr **\$3160.30**

## ▼ PLANNING AHEAD

Gas vs. Charcoal? The age-old debate over which grilling method is better involves multiple variables, from flavor to cost to convenience. From a taste perspective a gas grill contributes little flavor to the taste of food while the charcoal grill adds a smokier, richer taste. Many people prefer the added flavor of food cooked on a charcoal grill.

To learn more visit: [eatingwell.com](http://eatingwell.com)

### Transportable Outdoor Charcoal Grill

- Aluminized steel construction
- One person adjustable top grid
- Snap-in leg system with 6" heavy duty casters
- Lightweight for easier transport

**CGL60**

60" wide

**\$860.20**

**MagiKitch'n**



Bottom Mount Reach-Ins

- Stainless steel exterior front and sides
- Bright white aluminum interior with stainless steel floor and coved corners
- 3 epoxy coated wire shelves per section
- Self closing door
- Freezer doors have heating element to eliminate condensation
- Electronic thermostat with external LED display
- 32¾" d x 82¾" h
- 1 year parts and labor warranty and 5 year compressor warranty



REFRIGERATORS	WIDTH	DOORS	HP	
AR23	26¾"	1	⅜	<b>\$1399.00</b>
AR49	54"	2	½	<b>\$2095.00</b>
FREEZERS				
AF23	26¾"	1	⅜	<b>\$1549.00</b>
AF49	54"	2	½	<b>\$2325.00</b>



USRF-1D/19  
**\$1013<sup>99</sup>**

U-Star Bottom Mount  
Narrow Depth Reach-Ins

- Stainless steel exterior
- Painted aluminum interior
- Precise digital controller with LED display
- Recessed door handle
- 6" casters (two with brakes)
- 1 door, 3 shelves
- 25" d x 82½" h
- 1 year parts and labor, 5 year compressor warranty

REFRIGERATOR	WIDTH	HP	
USRF-1D/19	29"	¼	<b>\$1013.99</b>
FREEZER			
USFZ-1D/19	29"	½	<b>\$1126.99</b>

U-Star Bottom Mount  
Reach-Ins

- Stainless steel exterior and interior
- Precise digital controller with LED display
- Recessed door handle
- 6" casters (two with brakes)
- 3 shelves per section
- Automatic defrosting
- 32" d x 82½" h
- 1 year parts and labor, 5 year compressor warranty

REFRIGERATORS	WIDTH	DOORS	HP	
USRF-1D	29"	1	⅓	<b>\$1356.99</b>
USRF-2D	54"	2	½	<b>\$2021.99</b>
FREEZERS				
USFZ-1D	29"	1	½	<b>\$1433.99</b>
USFZ-2D	54"	2	1	<b>\$2168.99</b>





## Maxx Cold X-Series Glass Door Merchandisers

- Powder coated steel exterior
- Powder coated steel interior top and sides, S/S floor
- Electronic thermostat and digital LED temperature display for accurate control and easy reading
- Self-closing double-pane glass doors
- LED lighting
- Available in Painted Steel or Black Steel (B) exterior
- 32"d x 79"h

REFRIGERATORS	WIDTH	DOORS	SHELVES	
MXM1-23R	27"	1	4	<b>\$1593.15</b>
MXM2-48R	54"	2	8	<b>\$2298.53</b>
MXM3-72R	81"	3	12	<b>\$3679.35</b>
FREEZERS	WIDTH			
MXM1-23F	27"	1	4	<b>\$2248.18</b>
MXM2-48F	54"	2	8	<b>\$3294.13</b>
MXM3-72F	81"	3	12	<b>\$4691.10</b>

## Undercounter Refrigerator

- Stainless steel exterior front, sides and top
- Cabinet and doors are insulated with 2" of CFC free, polyurethane foam
- Standard with 4" stem casters (two with brakes)
- 36"w x 31"d x 33.63"h
- 3 years parts and labor warranty, 5 year compressor warranty



CRMR36  
**\$1771<sup>44</sup>**



CRMR48-18M

## Commercial Series Mega Top Sandwich Units

- Stainless steel exterior front, sides and top
- Anodized aluminum interior sides and back with stainless steel interior floor
- Provided with a full complement of polycarbonate plastic 1/2 size, 4" deep pans
- 1/2" thick full length white polyethylene cutting board is standard
- 30"d x 45.2"h
- 6" casters
- 3 year parts and labor, 5 year parts on compressor warranty

	WIDTH	PAN CAPACITY	SHELVES	
CRMR48-18M	48"	18	2	<b>\$2592.74</b>
CRMR72-30M	72"	30	3	<b>\$3321.45</b>

## Low-Profile Refrigerated Equipment Stand

- Stainless steel exterior front, sides and top
- 16 gauge stainless steel top with marine edge front and rear with 1" turn-up at each end
- Top has built-in Hoshizaki ceramic heat shield
- Solid state digital controls with temp. alarm and LED display
- Drawers have 250 lb capacity and will accommodate 2 full size and 1 half size pan up to 6" deep
- 3 year parts and labor, 5 year compressor warranty

CRES49 49"w x 33 1/4"d x 27"h **\$4505.09**

36", 60", 72", 85", 98" AND 110" WIDE MODELS ALSO AVAILABLE





BDCF-5



## Black Diamond Chest Freezers

- Steel exterior with white powder coated finish
- R134a refrigeration
- Includes wire coated basket for organization
- 33" high



**Admiral Craft**  
Equipment Corp.

	W x D	CU FT	
BDCF-5	30 $\frac{3}{4}$ " x 22"	5.4	<b>\$292.99</b>
BDCF-9	40 $\frac{1}{2}$ " x 22"	8.7	<b>\$365.99</b>
BDCF-10	40 $\frac{1}{2}$ " x 29 $\frac{3}{4}$ "	9.6	<b>\$413.99</b>
BDCF-13	50" x 29 $\frac{3}{4}$ "	12.6	<b>\$486.99</b>
BDCF-16/2	60" x 29 $\frac{3}{4}$ "	15.9	<b>\$603.99</b>

## Self-Contained Ice Machine

- Produces full cubes
- Air-cooled
- Front breathing inlet and discharge
- Front access to ice - door slides up and in
- Corrosion-resistant stainless steel exterior with plastic door and bin liner
- 26"w x 28.6"d x 37.4"h w/legs
- 125 lb storage capacity

SC201  
150 lb Ice Production  
per 24 hr\*

**\$2224<sup>99</sup>**

\*BASED ON  
70°F AIR AND 50°F  
WATER TEMPERATURES



**KOLD-DRAFT**

Ice machines - bins - crushers - dispensers

## Cubelet Ice Machine

- Corrosion resistant stainless steel
- Automatic flush system
- Convenient drop down door
- Air cooled
- Removable air filter
- Protected by *H-GUARD* Plus Antimicrobial Agent
- 3 year parts and labor warranty



\*BASED ON  
70°F AIR AND 50°F  
WATER TEMPERATURES



ICE PRODUCTION\*  
PER 24 HOURS

F-330BAJ-C

288 lb

80 lb

**\$3500.00**



CB249A



## Ice Makers

- Air cooled
- All stainless steel
- Electro-mechanic operations
- Includes two thermostats (bin and evaporator) and a timer
- 120V
- 3 year parts and labor and 5 year warranty on compressor
- Gravity drain only

**eurodib**

	STORAGE	ICE PRODUCTION/ 24 HOURS*	CUBE SIZE	
CB249A	20 lb	62 lb	13g	<b>\$1168.99</b>
CB425A	55 lb	102 lb	13g	<b>\$1592.99</b>
CB674A	88 lb	145 lb	13g	<b>\$1688.99</b>

\*BASED ON 70°F AIR AND 50°F WATER TEMPERATURES

## Slim-Line Modular Crescent Cubers and Storage Bins

- Durable stainless steel exterior
- Individual crescent shaped cubers
- Protected by *H-Guard Plus* Antimicrobial Agent
- CycleSaver™ Design - fewer cycles for less wear and tear
- EverCheck™ alert system - tells when unit needs service
- Air-cooled
- R-404A refrigerant



CUBERS	WIDTH	ICE PRODUCTION* PER 24 HOURS	
KM-340MAH†	22"	387 lb	<b>\$2400.00</b>
KM-515MAH†	22"	527 lb	<b>\$2655.00</b>
BINS	WIDTH	ICE STORAGE CAPACITY	
B300PF	22"	Up to 300 lb	<b>\$835.00</b>
B500PF	30"	Up to 500 lb	<b>\$925.00</b>

\*BASED ON 70°F AIR AND 50°F WATER TEMPERATURES  
†ENERGY STAR®



KM-515MAH WITH  
B500PF BIN



## Self-Contained Cuber with Built-In Storage Bin

- Durable stainless steel exterior
- Produces top-hat style full cubers
- Undercounter design is less than 34" tall
- Swing style, reversible door
- Open cell evaporator
- R-134a refrigerant
- Fewer moving parts for longer life
- Air cooled
- 22 lb storage capacity



**AM-50BAE**  
55 lb Ice Production\*  
Per 24 hr  
**\$1720<sup>00</sup>**

\*BASED ON 70°F AIR  
AND 50°F WATER  
TEMPERATURES



## Self-Contained Cuber with Built-In Storage Bin

- Durable, stainless steel exterior
- Stainless steel evaporator
- Produces individual hard, clear crescent shaped cubers
- EverCheck™ alarm system - audible alarm when service is needed
- CycleSaver™ - produces same quantity of ice in half as many cycles as competitor
- Air cooled
- R-134a refrigerant
- 78 lb storage capacity



**KM-151BAH**  
146 lb Ice Production\*  
Per 24 hr  
**\$1937<sup>99</sup>**

\*BASED ON  
70°F AIR AND 50°F  
WATER TEMPERATURES



BIN SOLD SEPARATELY

## Stackable Square Cuber

- Large square individual cubers approximately 1¼" square
- Durable stainless steel exterior
- Air cooled
- Air filter easily removable from front of unit
- 44"w x 27½"d x 21¼"h



ICE PRODUCTION\*  
PER 24 HOURS

**IM-500SAA** 500 lb **\$3640.00**

\*BASED ON 70°F AIR AND 50°F WATER TEMPERATURES



**Watts Hydro-Safe®  
QT™ Cube Max™**

- Increases ice machine life, performance and quality
- Simple filter replacement using QT cartridges quarter-turn technology
- Reduces scale build-up, sediment, chlorine, taste and odor
- In/Out valves for easy filter service



**Watts Hydro-Safe®  
Competitive  
Replacement Filters**

- Keeps ice machines functioning at full capacity
- Reduces scale buildup
- Reduces sediment, chlorine, taste and odor



	GPM	CAPACITY ICE/DAY		GPM	CAPACITY	PK	SALE/CS
QTCBMX-1S-1M	1.5	750 lb	<b>\$146.99</b>	HSR-EP-2000	1.67	9,000 gal	12 <b>\$463.99</b>
				HSR-EP-4000	1.67	12,000 gal	6 <b>\$281.99</b>

**Watts Hydro-Safe® Series  
QT™ Steam Max™**

- Steam and combi oven filtration system
- Highly effective coconut shell carbon filtration for longer equipment life, performance and quality
- Simple filter replacement using QT cartridges
- Reduces scale build-up, sediment, chlorine, taste and odor
- Uses OneFlow Anti-Scale System for reducing hard water scale
- In/out valves for easy filter service

	GPM	CHLORINE CAPACITY	
QTSTMMAX-2S-1M	1.5	15,000 gal	<b>\$337.99</b>
QTSTMMAX-3S-1M	3	30,000 gal	<b>\$512.99</b>



BLCT-6E-H



**Boilerless Electric Mini Combi Ovens**

- Requires no top clearance
- Stainless steel interior and exterior
- Reversible 9 speed fan
- Easy to use touchscreen control stores up to 500 recipe programs with 15 steps each
- Core temperature probe
- 2-piece rack system supports 12" x 20" pans
- 20.2" wide



**2016 Kitchen Innovations® Award Winner**  
To learn more visit: [show.restaurant.org](http://show.restaurant.org)

BLCT-6E	30.18"h, (5) 2"d or (4) 2½"d Pan Cap.	<b>\$10,211.00</b>
BLCT-10E	38.05"h, (10) 2"d or (6) 2½"d Pan Cap.	<b>\$11,894.00</b>
W/HOODINI™ VENTLESS HOOD		
BLCT-6E-H	45.6"h, (5) 2"d or (4) 2½"d Pan Cap.	<b>\$15,356.00</b>
BLCT-10E-H	54.6"h, (10) 2"d or (6) 2½"d Pan Cap.	<b>\$17,292.00</b>



## Full Size Convection Ovens

- 2 speed ½ hp convection motor for fast and gentle baking
- Fully welded angle iron frame
- Stainless steel doors with dual-pane thermal glass windows
- Five chrome-plated racks, eleven rack positions
- Solid state manual control
- Accommodates 5 - 18" x 26" full size baking pans per oven
- 25" stainless steel legs (double units have 6" stainless steel legs)
- 38¼" w x 36½" d

ELECTRIC\*

**SHO-100-E-SINGLE** 57"h, 208V, 11kW **\$3095.00**

**SHO-100-E-DOUBLE** 70¾"h, 208V, 22kW **\$6190.00**

GAS

**SHO-100-G-SINGLE** 57"h, 50,000 Btu **\$3095.00**

**SHO-100-G-DOUBLE** 70¾"h, 100,00 Btu **\$6190.00**

\*ENERGY STAR®



\*



## GoldenFry™ Standard Gas Workhorse Fryer and Filtration System

- 35-50 lb oil capacity
- Stainless steel sides, front, door and frypot
- No tube, open pot design
- 111,000 Btu input uses unique cross fire burners to cook like a 125,000 Btu fryer
- 2 baskets
- 4 sided heating system provides maximum recovery
- Fully insulated cabinet keeps the kitchen cool
- Extra large 1½" full port ball drain valve

14GS

**\$1210<sup>00</sup>**

14GS-2FM

Fryer Battery w/Filter System  
2 (35-50 lb) Fryers

**\$8345<sup>00</sup>**

14GS-2FM



## SilverLine™ Gas Fryers

- Stainless steel frypot, front, door, backsplash and basket hanger
- Center mounted thermostat
- Standard with 6" legs
- Large cold zone allows food particles to fall below burner tubes to prolong shortening life and allow for easy cleaning

SLG40



**SLG40** 40 lb Oil Capacity, 90,000 Btu, 2 Tubes **\$660.00**

**SLG50** 50 lb Oil Capacity, 120,000 Btu, 3 Tubes **\$875.00**

**SLG100** 70-100 lb Oil Capacity, 150,000 Btu, 4 Tubes **\$1280.00**



Tube Fired Gas Fryers

- Medium production
- Stainless steel tank, cabinet front and door, galvanized sides and back
- Standing pilot light and thermostat maintain selected temperature automatically between 200° and 400°F
- Stainless steel heat baffles
- Two baskets with removable hanger
- Drain extension and clean-out rod
- 6" adjustable legs



35C+S	35-40 lb Oil Capacity, 3 Tubes, 90,000 Btu, CSAus, CE
40D	40-45 lb Oil Capacity, 4 Tubes, 115,000 Btu, CSA Gas
65C+S	80 lb Oil Capacity, 5 Tubes, 150,000 Btu, CSAus

**\$725.00**  
**\$885.00**  
**\$1299.00**



SG18S

Solstice™ Tube Fired Gas Fryers

- High production
- Stainless steel tank, front, door, sides, and splashback
- Welded tank with an extra peened finish and formed sides for additional strength
- Stainless steel heating tubes standard
- Serviceable from the front
- No block flue design
- 1 1/4" full port drain valve - quick, clog free draining
- Millivolt thermostat



SG14S	40-50 lb Oil Capacity, 4 Tubes, 110,000 Btu	<b>\$1575.00</b>
SG18S	70-90 lb Oil Capacity, 5 Tubes, 140,000 Btu	<b>\$2499.00</b>

Blue Hose® Gas Connector Kits with Swivel MAX®

- Features Dormont Blue Hose®, SnapFast® one-handed quick disconnect fitting, coil restraining device, full port gas ball valve and (2) 90° street elbows
- Antimicrobial PVC coating helps to prevent grease buildup, inhibiting the growth of bacteria, mold and mildew
- Swivel MAX® provides 360° multiplane movement for maximum equipment mobility and it decreases stress on the connector to create a safer gas connection to caster-mounted appliances



SWIVEL MAX®

1675KITS36	3/4" x 36"	<b>\$182.99</b>
1675KITS48	3/4" x 48"	<b>\$196.99</b>



## High Temp Undercounter Dishwasher

- Upper and lower stainless steel rotating wash and rinse arms
- Safe-T-Temp feature guarantees 180° final rinse
- Includes chemical dispenser
- Uses only .86 gallons of water per cycle
- 30 racks/120 covers per hour
- Includes 9 compartment rack that converts machine into a bottle washer
- Rack holds bottles up to 11½" h and 6" dia

CMA-180 UC W/CD 24"w x 25"d x 33¼"h **\$5582.00**



## Low Temp Undercounter Dishwasher

- Upper and lower stainless steel wash arms with reinforced end caps
- All stainless steel construction
- Comes with sustainer heater that keeps the rinse water at 140°F
- Built-in chemical pumps and deliming system
- Uses only 1.7 gallons of water per cycle
- 30 racks/120 covers per hour
- Includes 1 combination rack and 1 peg rack

L-1X W/HEATER 24"w x 23½"d x 34¼"h **\$3961.00**



## Energy Miser® Low Water Dishwashers

- All stainless steel construction
- Unique spray arm system features upper and lower stainless steel wash arms with reinforced end caps
- Top mounted controls include built-in chemical pumps and deliming system
- Auto start/stop makes operation safe and easy
- Integrated scrap tray prevents food soil from entering drain system
- 40 racks/160 covers per hour
- Economical - uses only 1.01 gallons of water per cycle
- 24"w x 23"d x 34"h

E-AH Straight

**\$3690.00**

E-C Corner

**\$3732.00**



## Conveyor Dishwasher

- All stainless steel construction
- Stainless steel chemical injection chamber
- Power rinse heater system
- Large 19" opening
- Auto start/stop
- Uses only .49 gallons of water per rack
- 243 racks, 16 gallon wash tank, 150° - 160°F (wash), 180° - 195°F (rinse)

EST-44 44"w x 25½"d x 55½"h **\$11,599.00**





## Stainless Steel Equipment Stands

- Heavy duty 16 gauge stainless steel top shelf can hold up to 800 lb
- 18 gauge adjustable undershelf is made of galvanized steel and can hold up to 600 lb
- 1½" diameter galvanized steel legs with adjustable ABS bullet feet
- Screws and hardware included
- 24"h

ES-3024	24"w x 30"d	<b>\$112.99</b>
ES-3036	36"w x 30"d	<b>\$141.99</b>
ES-3048	48"w x 30"d	<b>\$170.99</b>
ES-3060	60"w x 30"d	<b>\$211.99</b>
ES-3072	72"w x 30"d	<b>\$240.99</b>
ES-1	4" Casters, Set of 4	<b>\$56.99</b>



NSF



***Collapses  
for easy  
storage.***

## Folding Spacesaver Prep Table

- 430 S/S, 18 gauge
- Contains both nickel and chromium
- 48" x 30" x 30½"

BT184F3048F  
**\$135<sup>99</sup>**

NSF



A Division of The Legacy Companies

## Open Base Prep Table

- 304 S/S, 16 gauge
- 1½" S/S legs with adjustable S/S bullet feet
- Holds approximately 700 lb
- 48" x 30" x 34"

BT163F3048O  
**\$248<sup>99</sup>**

NSF



## Wire Shelving

- High gloss epoxy finish
- Poly-Green™: Features NexGard antimicrobial agent protection
- 600-800 lb capacity per shelf
- Suitable for wet or dry applications

- Black Epoxy: 7 year warranty against rust or corrosion
- Poly-Green™: 15 year warranty against rust or corrosion

### POLY-GREEN™ SHELVES

18" WIDE		
S1836G	36"l	<b>\$21.99</b>
S1848G	48"l	<b>\$28.99</b>
S1860G	60"l	<b>\$33.99</b>
S1872G	72"l	<b>\$38.99</b>

### POLY-GREEN™ SHELVES

24" WIDE		
S2436G	36"l	<b>\$27.99</b>
S2448G	48"l	<b>\$33.99</b>
S2460G	60"l	<b>\$41.99</b>
S2472G	72"l	<b>\$49.99</b>

### POLY-GREEN™ POSTS

P63G	63"	<b>\$9.99</b>
------	-----	---------------

P74G	74"	<b>\$10.99</b>
------	-----	----------------

### BLACK SHELVES

18" WIDE		
S1836B	36"l	<b>\$17.99</b>
S1848B	48"l	<b>\$23.99</b>
S1860B	60"l	<b>\$27.99</b>
S1872B	72"l	<b>\$32.99</b>

### BLACK SHELVES

24" WIDE		
S2436B	36"l	<b>\$23.99</b>
S2448B	48"l	<b>\$27.99</b>
S2460B	60"l	<b>\$35.99</b>
S2472B	72"l	<b>\$40.99</b>

### BLACK POSTS

P63B	63"	<b>\$7.99</b>
------	-----	---------------

P74B	74"	<b>\$8.99</b>
------	-----	---------------



BLACK SHOWN

NSF



## Everyday **SAVINGS**

### Catalina Olefin Carpet Mats

- Fade resistant commercial grade olefin mats are perfect to trap dirt, debris and water at any entrance
- Vinyl backing protects floors
- Cleans easy with vacuum or hose

1437M-L35      3' x 5', Charcoal      **Your Choice!**  
1437M-B35      3' x 5', Brown      **\$29<sup>99</sup>**

1437M-L46      4' x 6', Charcoal      **Your Choice!**  
1437M-B46      4' x 6', Brown      **\$46<sup>99</sup>**



*Superior anti-fatigue properties!*

### VIP Black Cloud Floor Mats

- Lightweight and grease proof
- Antimicrobial additive
- Avoid using in very wet areas
- ¾" thick
- Molded non-absorbent closed cell foam rubber construction
- Tapered on all sides for safety
- Anti-slip textured surface
- 5 year guarantee against breakdown from grease

2200-23      2' x 3', Solid      **\$54.99**  
2200-35      3' x 5', Solid      **\$105.99**  
2200-35H      3' x 5', Drainage Holes      **\$107.99**

### VIP Topdek Junior Floor Mats

- Molded, beveled edge on all sides for easy cart access
- Anti-slip and anti-fatigue surface for a safer work area
- Lightweight for ease of handling
- Excellent drainage of liquids and waste
- 3' x 5' x ½" thick

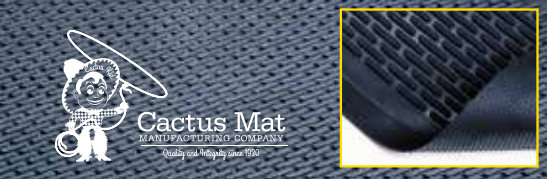
2530-C5      General Purpose, Black      **\$27.99**  
2530-R5      Grease Resistant, Red      **\$39.99**



### Ridge-Scraper Floor Mat

- Heavy duty rubber safety scraper provides traction in critical areas
- Slip resistant surface with raised ridges effectively scrapes dirt and debris from shoes
- Resilient for worker comfort
- Perfect for behind counters, work stations, locker rooms, restaurants, outside entrances
- Use in non-grease areas
- 3' x 5' x ¾" thick

1625-35      Black      **\$47.99**



### Mat Cabinet with Sink

- 18 ga type 300 stainless steel with satin finish
- 2 swing double panel doors with lock handle
- Mat hangers
- Oversized sink: 38" x 20" x 6" with 3½" drain
- Side mounted mop/broom holder with locking cam
- Fold down chemical shelf
- Service faucet and 10' hose

PBMC-432683  
**\$2795<sup>99</sup>**



## Everyday SAVINGS



### Flashing "Caution Wet Floor" Safety Sign

- Bright yellow floor sign with lights for added visibility communicates a warning message in two languages
- Lights can be set to steady, flashing or off
- Two-sided, fold flat design

96992 25" high **\$16.99**

### Quick-Way™ Mop Kit

- 4 ply cotton/synthetic blend cut-end yarn mop with 1 1/4" headband
- Quick-Way handle with side release for quick mop change
- 60" plastic handle can be used with all 1" or 5" headband mops

6555 **\$11.99**



### MaxiSorb® Mop

- Non-woven cut-end mop
- Will not mold or mildew
- #24, 1" headband

93613 **\$4.99**



### MaxiPlus® Mop Bucket & Wringer

- 36 quart bucket
- Ergonomic wringer handle
- 3" non-marking swivel casters
- Green

6980 **\$85.99**



### MaxiPlus® Lobby Dust Pan w/Rear Wheels

- Ultra thin edge makes sweeping up particles quick and easy
- Easy-Lock™ handle securely locks handle in upright position; truly hands free emptying
- Reinforced yoke eliminates cracking
- Swivel hang cap on handle

96208 **\$12.99**



### MaxiSweep™ Angle Brooms

- 48" fiberglass handle
- 13" sweeping surface
- Flagged bristles sweep the finest particles

91355 Yellow

91360 Green

- Fully washable, long-lasting PET bristles

**Your Choice!**  
**\$14.99**



### MaxiPlus® Professional Angle Broom

- 48" metal handle with swivel hang cap will not crack, warp or splinter
- 14" sweeping surface
- Unflagged bristles prevent ends from matting together
- Fully washable, long-lasting synthetic PET bristles

91284 **\$13.99**



### MaxiPlus® Floor Squeegee

- 3" twin synthetic rubber blades
- Galvanized metal frame
- 54" handle included
- Acme threaded sleeve for secure handle fit

6818 **\$7.99**



### Bi-Level Brush w/Squeegee

- Split shape with dual positions
- Curved head effectively scrubs corners
- Heavy-duty hygienic 10" beige plastic block will not crack, warp, or mildew
- Washable 2" red polypropylene bristles
- 54" black metal threaded handle

6615 **\$15.99**



### MaxiRough® Grill Screens

- Tough aluminum oxide abrasive removes burnt on foods
- Open mesh design resists clogging
- Sold by case pack only

93188 20 bags of 10

SALE/CS

**\$43.99**

93190 50 bags of 8

**\$87.99**



**STARTING AT \$1.76 PER BAG!**

### Scrubbing Sponges

- Cellulose sponge
- Medium abrasive back
- 6 1/4" x 3 1/4"
- Sold by case pack only

96146 20/pack

SALE/CS

**\$23.99**

96146-M 40/pack

**\$28.99**



**STARTING AT 73¢ EACH!**

### MaxiPlus® Microfiber Bar Towel

- Withstands hundreds of washes
- Lint, scratch and streak-free
- 14" x 18"
- Sold by case pack only

6060-150 15 bags of 10 **\$143.99**

SALE/CS

**\$143.99**



**ONLY \$9.60 PER BAG!**

## MaxiScour™ Medium Duty Scour Pad

- Nylon green pad is perfect for general cleaning
- 6" x 9"
- Sold by case pack only



ONLY  
**\$2.83**  
PER BAG!

93085-M 6 bags of 10 **\$16.99**

## MaxiScour™ Scrubbers

- High-grade stainless steel with four-sided strands
- Will not tear, splinter, rust or corrode
- Sold by case pack only



STARTING AT  
**\$4.33**  
PER BAG!

96142-M Large, 35 grams, 6 bags of 12 **\$25.99**

96143-M X-Large, 50 grams. 6 bags of 12 **\$32.99**

## MaxiClean Eraser Sponge & Scrubber

- Chemical-free, requires only water
- Eliminates crayon, ink, permanent marker and scuff marks
- 4½" x 2¾" x 1½"
- Sold by case pack only



ONLY  
**\$3.33**  
PER BAG!



*Eraser Scrubber has  
a Foam Center.*



96150-M Eraser Sponge, 6 bags of 4 **\$19.99**

96152-M Eraser Scrubber, bag of 24 **\$20.99**

## Slim Jim® Containers w/Venting Channels, Lids & Dollies

- Patented integrated venting channels take the strain out of liner removal
- Space-saving profile fits virtually anywhere
- Four can liner cinches improve productivity
- Molded-in handles and base grips make lifting and emptying containers easier
- The tight fitting lids provide protection and sanitation for products



*Collect and transport waste and recyclables with a stainless steel or resin dolly for Slim Jim® containers.*

### WASTE CONTAINERS

1955959	16 Gallon, Black	<b>\$41.51</b>
1971258	16 Gallon, Gray	<b>\$41.51</b>
FG354060BLA	23 Gallon, Black	<b>\$53.35</b>
FG354060GRAY	23 Gallon, Gray	<b>\$53.35</b>

### LIDS

FG267360BLA	Swing Lid, Black	<b>\$34.78</b>
FG267360GRAY	Swing Lid, Gray	<b>\$34.78</b>
FG269288BLUE	Bottle & Can Recycling, Blue	<b>\$35.66</b>
FG269288GRN	Bottle & Can Recycling, Green	<b>\$35.66</b>

### DOLLIES

1968468	Single, Stainless Steel	<b>\$107.83</b>
1956191	Double, Stainless Steel	<b>\$150.96</b>
1980602	Single, Resin, Trainable	<b>\$67.99</b>



## Brute Step-On Rollouts

- Pedal-actuated lid for hands-free use
- Heavy-duty wheels with high-performance treads are optimized for use indoors and outdoors
- Reinforced rim for superior structural integrity
- Rollout lids open fully and stay in place to prevent swinging during transport
- Ergonomic handle
- High-quality materials plus a UV inhibitor extend the life of the container
- Compliant with ANSI Standard Z245.60
- Swivel casters at the front of the container allow for more controlled use

1971944	32 Gallon, Gray	<b>\$112.84</b>
1971946	32 Gallon, Blue	<b>\$112.84</b>
1971956	50 Gallon, Gray	<b>\$125.00</b>
1971958	50 Gallon, Blue	<b>\$125.00</b>

### W/FRONT SWIVEL CASTERS

1971950	32 Gallon, Gray	<b>\$138.06</b>
1971952	32 Gallon, Blue	<b>\$138.06</b>
1971962	50 Gallon, Gray	<b>\$159.06</b>
1971964	50 Gallon, Blue	<b>\$159.06</b>

Everyday **SAVINGS**

Spiral Mixers

- Can handle various types of dough including pizza and pie dough, mixing scones and biscuits
- Built-in timer
- Emergency stop and bowl guard switch
- 1 year parts and labor (mixer)



LM20T



QT VOLT WATT AMP NEMA

LM20T	20	110	1100	10	5-15P	<b>\$1094.99</b>
LM30T	30	220	2640	12	6-20P	<b>\$1204.99</b>
LM40T	40	220	3080	14	6-20P	<b>\$1397.99</b>
LM50T	50	220	3080	14	6-20P	<b>\$1748.99</b>

Planetary Mixers

- Gear driven
- Includes stainless steel whip, hook, beater and bowl
- Safety switch on guard and bowl
- 1 year parts & labor warranty



M30  
**\$2393<sup>99</sup>**



eurodib

QT VOLT WATT AMP HP NEMA

M10 ETL	10	110	600	6	.7	5-15P	<b>\$610.99</b>
M20 ETL	20	110	1100	9	1.5	5-15P	<b>\$1049.99</b>
M30 ETL	30	110	200	14	2	15-5P	<b>\$2393.99</b>
M40A220 ETL	40	208	1500	5	2	3-phase*	<b>\$3353.99</b>
M60A220 ETL	60	208	2200	10	3.5	3-phase*	<b>\$4793.99</b>

\*HARD WIRE

Vacuum Pack Machine

- For internal & external vacuum
- Stainless steel
- Bag types: CB, SB & SCB Series
- 10" max bag width
- 110V, 2 mbar, 350W
- 1 year parts and labor warranty



EVOX25	9.8" Sealing Beam, 18.7"w x 17.4"l	<b>\$1368.99</b>
EVOX30	12" Sealing Beam, 19.5"w x 32"l	<b>\$1868.99</b>

Manual Medium Duty Slicers

- Hard chromed special alloy, hollow ground knife
- Large food carriage and product receiving area
- Permanently attached knife ring guard
- Slices tissue thin to 1/16" thickness
- Anodized aluminum
- Full gravity feed food chute
- Top mounted all metal knife sharpener
- 1 year parts and labor warranty



G10	10" Blade	<b>\$1031.00</b>
G12	12" Blade	<b>\$1345.00</b>

## Reversible Dough Sheeters

- 0 to 1.9" (48 mm) adjustable cylinder
- Hard chrome polished cylinders
- Interlock switches protect operator from injury
- Heavy duty rolling pins
- Chain drive, 19.6" belt width
- Floor models come standard with foot pedal operation (hand controls optional)
- 1 year, on-site parts and labor warranty

BENCH MODEL	TABLES	L x W x H
<b>SFG500B</b>	(2) 27.6" long	80.1" x 37.6" x 24.1"

**\$6622.00**



### TABLE MODELS

<b>SFG500T</b>	(2) 27.6" long	80.1" x 37.6" x 50"
<b>SFG500TM</b>	(2) 46.5" long	117.7" x 37.5" x 50"

**\$6752.00**

**\$6843.00**



## Semi-Automatic Square Dough Divider

- Produces 20 equal weight and shaped pieces in under 7 seconds - up to 1200 pieces/hr
- 1 year on-site parts and labor warranty

**SQD20** 5.3 oz to 28.2 oz, 23.8" w x 43.1"h (closed) **\$7680.00**

## Divider/Dough Rounder

- Semi-automatic; divides and rounds to exact weight by 11 or 14 sections
- Portions range from 3-11 oz (14 section) or 11-23 oz (11 section)
- Includes cup tray - specify size when ordering
- Great for bread and pizza dough
- 24"w x 28"d x 36.2"h
- 115V, ½ hp
- 1 year, on-site parts and labor warranty

**DR14** 3-11 oz, 14 Portions

**\$6500.00**

**DR11** 11-23 oz, 11 Portions

**\$6500.00**



## Semi-Automatic Bun Divider/Rounder

- Divides and rounds dough balls
- Produces 22 equal weight and shaped pieces in under 7 seconds - up to 2600 pieces/hr
- Programmable control board
- 26.4"w x 79.9"h extended

**SBDR22** 1.7 oz to 6.3 oz

**\$8348.00**



### Portion Control Scale

- Removable stainless steel recessed platter
- Operates on AC power or batteries (AC power supply included)
- Easy-to-read 1" LCD character display and push button tare
- Features include an auto shut off, low battery indicator
- 9¼" w x 9½" d x 3" h

**GPS10** .01 x 11 lb-oz, .1 x 176 oz,  
.01 x 5 kg, 1 x 5000g **\$108.99**

### Easy Chopper 3™

- New engineered nylon-based resin push block is more durable
- A higher, wider base can sprawl over a standard ½ or ¾ size 6" deep food pan
- Commercial-grade aluminum construction and high-tension stainless steel blades
- 4¼" square cutting area

- 57500-1 ¼" Square Cut  
57500-2 ⅜" Square Cut  
57500-3 ½" Square Cut  
57500-4 1" Square Cut  
57500-5 ¼" Slice  
57500-6 ⅜" Slice  
57500-7 ½" Slice



**Your Choice!**  
**\$239<sup>80</sup>**

*New color-coded blade assemblies and push blocks make correct change-out even faster and easier than before.*



**nemco®** | FOOD EQUIPMENT

### Easy Tomato Slicer™

- Compact size saves valuable work space
- Razor-sharp S/S blades cut with trouble free precision
- Vertical handle and protective guards
- High-density polyethylene slide board

- 55600-1 ⅜" Slice  
55600-2 ¼" Slice  
55600-3 ⅝" Slice

**Your Choice!**  
**\$201<sup>85</sup>**

### Easy Chopper™

- Comfortable, weighted handle does most of the work
- One cutting grid included
- Interchangeable cutting grids (sold separately) cut, chop and dice easily!
- Stainless steel grid blades stay sharp to cut cleanly with one stroke
- Sturdy base is well balanced on four legs with non-skid feet

- 55500-1 ¼" Cut  
55500-2 ⅜" Cut  
55500-3 ½" Cut  
55500-4 1" Cut

**Your Choice!**  
**\$167<sup>75</sup>**





## FoodPro Plus Infrared Thermometer

- Flip-down RTD probe, 1.5mm thin tip
- Integral timer
- Reduced risk of cross contamination
- LED target illumination for greater precision
- 2.5:1 distance to spot ratio
- Infrared: -30° to 525°F/35° to 275°C
- Probe: -40° to 392°F/-40° to 200°C

FPP-CMARK-US

**\$113.99**



**COMARK**

A Fluke Company



## Digital Timer

- Count-up and count-down functions
- Easel stand and magnetic back clip
- 99:59 timer with memory function

UTL264  
**\$6<sup>99</sup>**



## Refrigerated Drawer Thermometer

- Double stick tape for securing inside a refrigerated drawer or any cooler or freezer
- Easy-to-read colored HACCP zones

UTL80 -20 to 80°F **\$3.99**

Everyday **SAVINGS**

## Waterproof Digital Thermometer

- Response time better than 6 seconds
- Accuracy +/-1°F/0.5°C
- Maximum temperature hold for use in commercial dishwashers
- Field calibratable
- BioCote® antimicrobial protection
- 5" stem reduces to a thin 1.5 mm tip

DT400 -4° to 400°F **\$19.99**



## Coffee Thermometer

- Special color indication over frothing range
- Stainless steel construction
- Magnifying, water-tight dial cover
- 5" stem with clip
- +/-1° accuracy

T200L  
100° to 200°F

**\$3<sup>99</sup>**



## Black Fibrox® Pro Cutlery

- Hand finished blades are high carbon stainless steel with taper ground, beveled edges
- Tempered for a superior edge
- Lifetime guarantee
- Ergonomic handles



40513	Boning Knife, 6"	<b>\$15.29</b>
41529	Santoku, Granton Edge, 7"	<b>\$31.48</b>
40520	Chef's, 8"	<b>\$27.53</b>
40521	Chef's, 10"	<b>\$30.56</b>
40539	Cimeter Knife, 10"	<b>\$31.43</b>
40547	Bread, 10 1/4"	<b>\$27.84</b>
40550	Bread/Deli Knife, Offset, Wavy Edge, 9"	<b>\$16.99</b>
40645	Slicer, Granton Edge, 12"	<b>\$44.46</b>
40646	Slicer, Granton Edge, 14"	<b>\$58.99</b>

## Sharpening Steels

- Nylon handles are ergonomically designed so wrist tension is minimized
- 12" long



40689	Oval, Hollow Rod	<b>\$31.99</b>
40584	Round, Regular Cut	<b>\$22.99</b>



**VICTORINOX**  
SWISS ARMY

## Knife Sharpener

- Tungsten carbide blade



49002  
**\$16<sup>99</sup>**



Millennia™  
Cut Resistant Gloves

- ANSI Level A5 cut protection
- Stainless steel reinforced knit construction
- FDA approved for food contact

M33413 XS, S, M, L, 1X **\$9.99/EA**



EconoKnit Work Gloves

- Made of a sturdy cotton/poly blend
- Cotton knit gloves are excellent as a glove liner or a work glove
- Ideal for meat processing, chemical or industrial uses
- 20 dozen pair per case



ONLY  
**51¢**  
A PAIR!

▼ **PLANNING AHEAD**

Look for gloves that prevent cuts without sacrificing manual movement. Breathable knit gloves are great for light duty work or can be used as a liner for metal mesh gloves. Metal mesh gloves provide heavy duty protection against slicing and dicing.

To learn more visit: [hiconsumption.com](http://hiconsumption.com)

1036210  
Men's  
**\$121.99**  
/CS



**tomlinson**®

Knit Work Gloves

- Manufactured from a durable cotton/poly/rayon
- Stain resistant and preshrunk
- Launderable 8 to 10 times
- Great as a liner under metal mesh or latex gloves, can also be used alone as work gloves
- 30 dozen pair per case



STARTING AT  
**52¢**  
A PAIR!

SALE/CS  
**\$197.99**  
**\$187.99**

1036211 Men's  
1036212 Women's



Cast Iron Skillets & Underliner

- 10" x 7" oval cast iron skillet for serving
- Underliner is made of cabinet grade hardwood and stained and sealed with a food safe sealer and lacquer

1016263 Skillet with Handle **\$12.99**  
1016266 Skillet without Handle **\$9.99**  
1016233 Underliner with Notch, Walnut Finish **\$14.99**

Supercast Cast Iron Fry Pans

- The finest grade cast iron for cooking or presentation

**tomlinson**®

1016255 10" dia **\$16.99**  
1016256 12" dia **\$23.99**





## Everyday SAVINGS

### Beanie

- 100% cotton
- One size fits most
- Expandable elastic back

### Your Choice!

**\$8<sup>96</sup>** /EA

BNBK  
Black



BNWH  
White



### Bistro Chef Coats

- 4.7 oz 65/35 poly/cotton 'lite' twill fabric, short-sleeve, tapered fit with side seam slits, back yoke with box pleat, pearl buttons, left sleeve thermometer pocket
- Black (BLK)

K150 Men's, S-3XL\*  
KL150 Women's, XS-2XL\*

**\$26<sup>96</sup>** /EA

\* NOTE CHEF COATS ARE SUBJECT TO UPCHARGES STARTING AT SIZE 2XL



### Full Length Chef Apron

- Poly-cotton, no pockets
- Extra long, extra wide with tie
- 38" w x 40" l
- White or Black

CFLA White  
CFLA Black

**\$15<sup>26</sup>** /EA



### Aprons

- Poly/cotton

- Black

F24-BLK Long Bistro, 28"w x 32"l

**\$9.86**

F28-BLK Half Bistro, 28"w x 19"l

**\$8.06**

F9-BLK Waist, 23"w x 12"l

**\$8.06**



Plazza Stacking Chairs shown with Vanguard top and base

Plazza Stacking Chairs

- Window pane design
- High backrest with a wide ergonomic seat
- Can be easily cleaned with soap and water
- Rated to 300 lb for safe use in commercial environments
- 3 year warranty

XA646202	Apple Red/Charcoal
XA646581	Linen/Charcoal
XA648096	Glacier White/Glacier White

Your  
Choice!  
**\$99<sup>00</sup>**

Vanguard Tabletops & Bases

- Built for performance durability in interior commercial environments
- Made of the toughest resin polymers
- Trendy architectural interior design
- Designed to eliminate wobbly tabletops
- 2 year warranty for interior use



TABLETOPS - VINTAGE OAK

US24VG45	24" x 30", Rectangular	<b>\$120.00</b>
US30VG45	30" x 30", Square	<b>\$150.00</b>
US03VG45	30" dia, Round	<b>\$152.00</b>
US36VG45	36" x 36", Square	<b>\$165.00</b>
US63VG45	36" dia, Round	<b>\$169.00</b>
US48VG45	48" x 30", Rectangular	<b>\$236.00</b>
US72VG45	72" x 30", Rectangular	<b>\$334.00</b>

PEDESTAL TABLE BASES -  
BLACK COLUMN/STAINLESS STEEL BASE

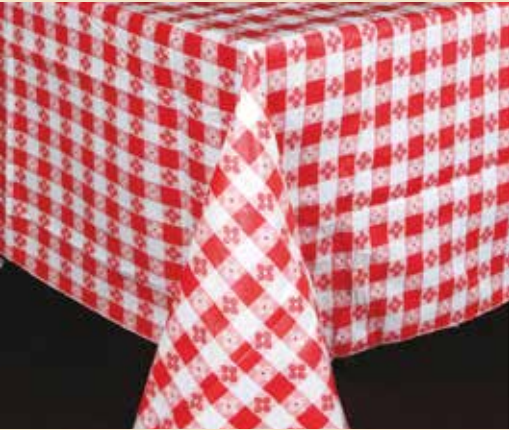
US181209	18" x 18"	<b>\$99.00</b>
US321209	22" x 22"	<b>\$125.00</b>

LATERAL TABLE BASE -  
BLACK COLUMN/STAINLESS STEEL BASE

US291209	16" x 28"	<b>\$160.00</b>
----------	-----------	-----------------

FIXED METAL TABLE BASES

US099017	28½" x 28½", Black	<b>\$81.00</b>
US099009	28½" x 28½", Silver Gray	<b>\$81.00</b>



Plastic Table Cloths



- Checkered pattern with cotton lining
- Available in Blue (B), Green (G), Red (R) and Black (K)

TBCS-52	52" x 52"
TBCO-70	52" x 70"
TBCO-90	52" x 90"

Call For  
Pricing



## Vintage Metal Bases & Cylinder Globes

- Weathered lamps are ruggedly chic and distinctly industrial
- Representing a fusion of style and personality, the Weld™ and Gear™ bases might be the most talked about items on the table
- Use with fuel cells:  
Gear™: HD30, HD36  
Weld™: HD17, HD26



2800VM	Gear™ Base, 3¾" dia x 2⅝"h	<b>\$14.99</b>
64C	Clear Globe, 2⅞" dia x 4½"h	<b>\$6.99</b>
2817VM	Weld™ Base, 2¾" dia x 2⅝"h	<b>\$9.99</b>
48C	Clear Globe, 3" dia x 5"h	<b>\$6.99</b>



2800VM  
w/48C

2817VM  
w/64C

## Disposable Liquid Fuel Cells



		PK	SALE/CS
HD8-180	8 Hour, 1½" dia x 1⅞"h	180	<b>\$65.99</b>
HD10	10 Hour, 1⅝" dia x 1⅞"h	144	<b>\$74.99</b>
HD12-144	12 Hour, 2" dia x 1⅞"h	144	<b>\$65.99</b>
HD15	15 Hour, 1¾" dia x 1¾"h	96	<b>\$56.99</b>
HD30	30 Hour, 2⅝" dia x 2¼"h	48	<b>\$45.99</b>
HD36	36 Hour, 2⅝" dia x 2⅝"h	24	<b>\$21.99</b>



## Glacier™ Lamps

- Candlelight gently melts through clear glass Glacier lamps with cool style and warm shimmering effect
- Use with fuel cells:  
Tealight: HD8  
Votive: HD10, HD12, HD15

5180C	Tealight, 2⅝" dia x 2¾"h	<b>\$5.99</b>
5188C	Votive, 2¾" dia x 4⅝"h	<b>\$7.99</b>



*Slate's unique, dark-hued design is the perfect backdrop to showcase any cuisine.*

## Slate Collection

- Food comes alive against rich tones and textures inspired by natural slate



SALE/DZ

S-R16	Rectangular Plate 9¾" x 4¾"	<b>\$99.99</b>
S-R21	Rectangular Plate 12" x 6"	<b>\$120.99</b>
S-R211	Rectangular Plate 12" x 7¾"	<b>\$144.99</b>
S-R28	Rectangular Plate 15¾" x 9¾"	<b>\$194.99</b>
S-E211	Engraved Rectangular Plate 12" x 7¾"	<b>\$415.99</b>
S-E28	Engraved Rectangular Plate 15¾" x 12"	<b>\$754.99</b>
S-O20	Oyster Plate 11⅞" x 6"	<b>\$170.99</b>
S-O28	Oyster Plate 16" x 7½"	<b>\$394.99</b>
S-8	Round Plate 8"	<b>\$121.99</b>
S-16	Round Plate 9¾"	<b>\$162.99</b>
S-21	Round Plate 11⅞"	<b>\$236.99</b>



CHARCOAL  
GRILL

— PAGE 15 —  
CGL60

\$860<sup>20</sup>



REFRIGERATED  
COUNTERTOP  
PREP UNIT

— PAGE 12 —  
ACP40



\$675<sup>00</sup>



ALL PRICES ARE SUBJECT TO CHANGE. WE ARE NOT RESPONSIBLE FOR TYPOGRAPHICAL ERRORS OR OMISSIONS. ALL PRICES, UNLESS NOTED, DO NOT INCLUDE FREIGHT AND DELIVERY.

NOT ALL ITEMS ARE IN STOCK AND MAY NOT BE AVAILABLE. SOME ITEMS ARE SPECIAL ORDER AND ARE SUBJECT TO CASE PACK QUANTITIES ONLY. PLEASE INQUIRE WITH YOUR SALESPERSON. DUE TO FLUCTUATIONS IN STAINLESS STEEL PRICING, SOME PRODUCT PRICING SUBJECT TO CHANGE WITHOUT NOTICE. IMAGES MAY NOT ACCURATELY REPRESENT ITEMS ON SALE, AND ARE MEANT FOR ILLUSTRATIVE PURPOSES ONLY.

PRICES EFFECTIVE THRU JUNE 30, 2017